

God's Promise to Adam and Eve



God made the earth and planted a beautiful garden in Eden. He created a man called Adam and put him in the garden to take care of it.

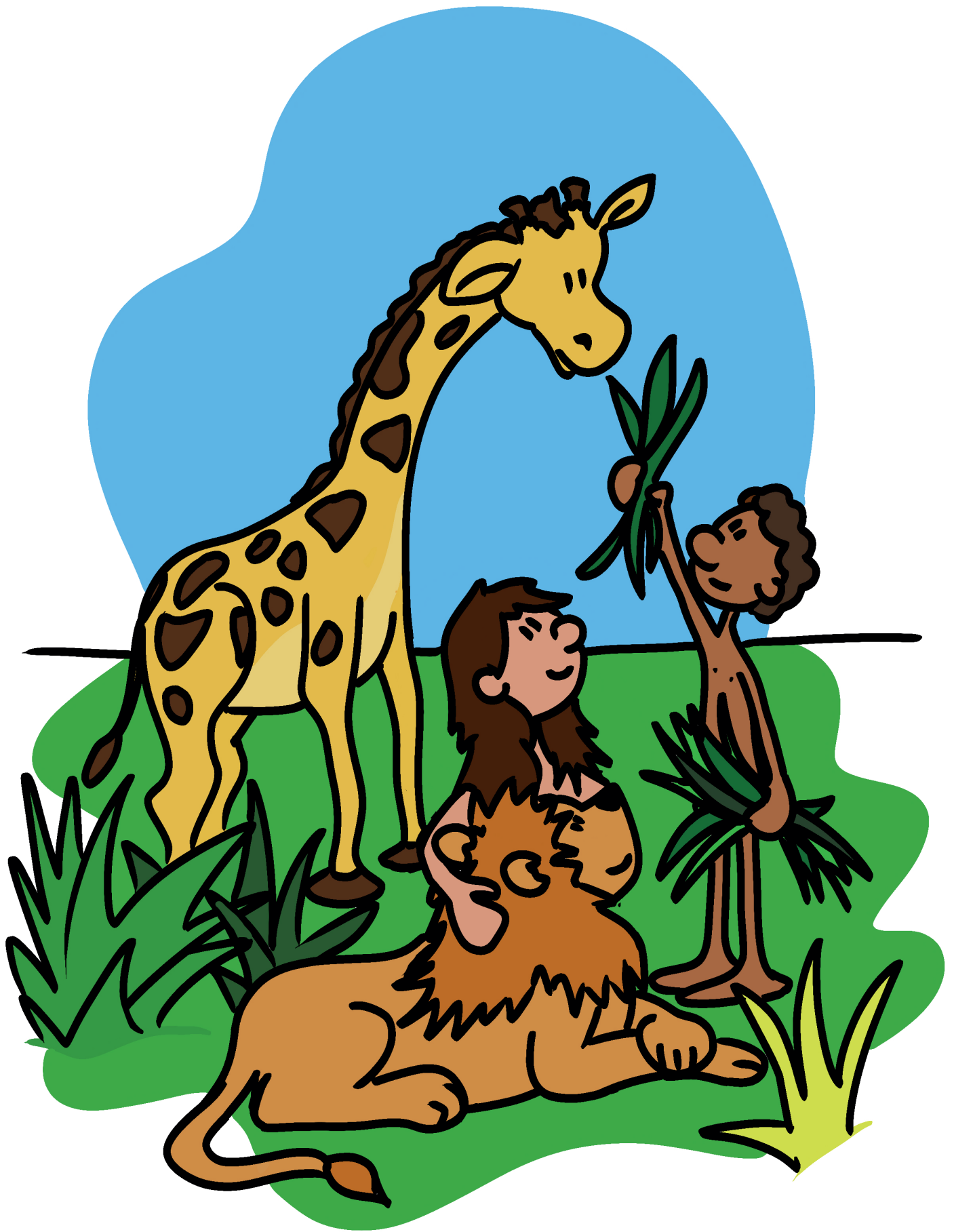
God said to Adam, "You are free to eat from any tree in the garden; but you must not eat from the tree of the knowledge of good and evil, for when you eat of it you will certainly die."



But Adam was all alone. There was no suitable helper for him.

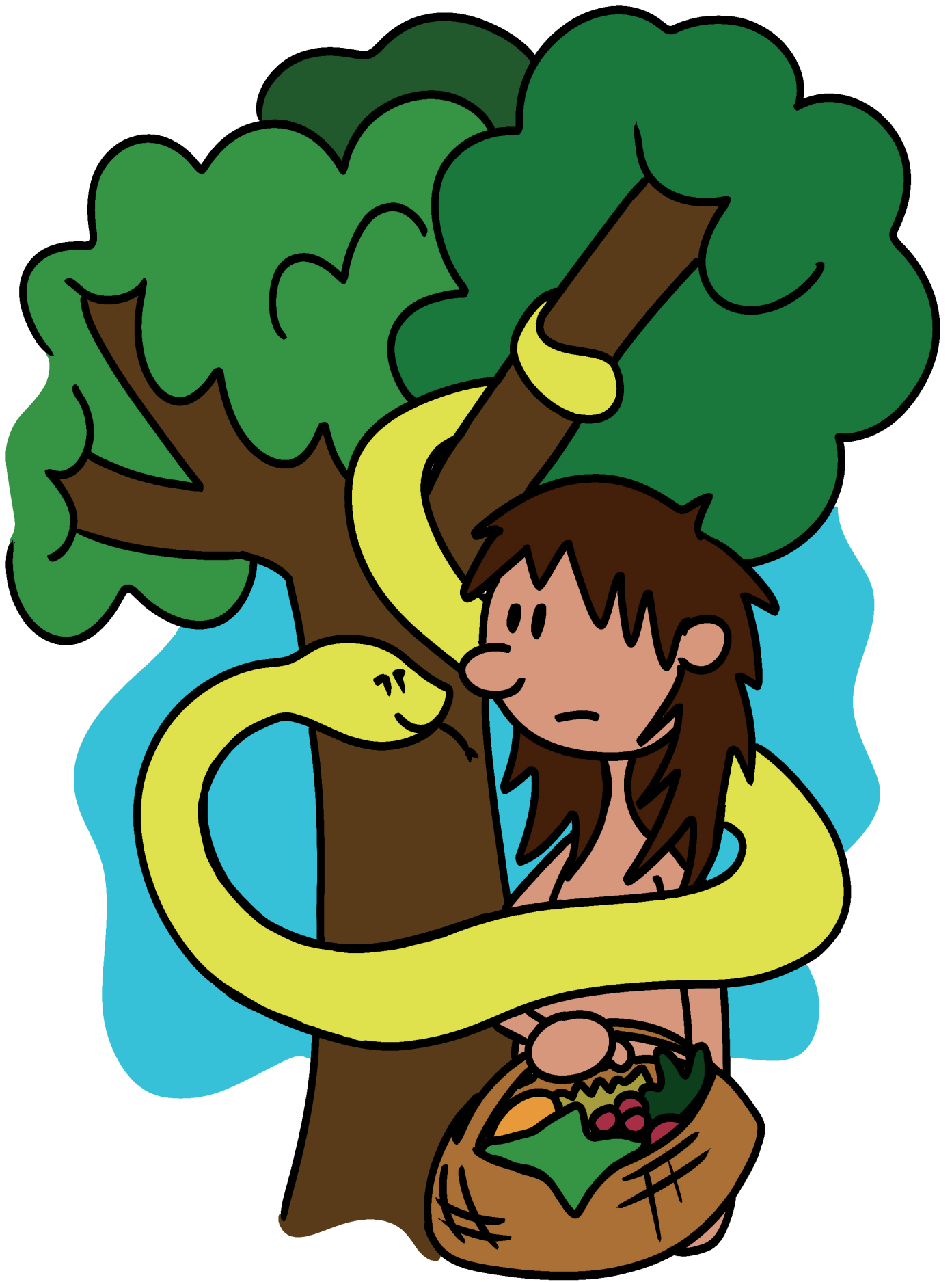
So God made a woman and brought her to Adam. Adam named her Eve.

Adam and Eve lived in God's very good garden and ruled over all the living creatures.



Now the serpent was more crafty than any of the wild animals in the garden. He said to Eve, "Did God really say, 'You must not eat from any tree in the garden'?"

Eve said, "We may eat fruit from the trees in the garden. But God did say, 'You must not eat fruit from the tree in the middle of the garden, and you must not touch it, or you will die.'"



"You will not certainly die," the serpent said. "For God knows that when you eat from it your eyes will be opened. You will be like God, knowing good and evil."

When Eve saw that the fruit of the tree was good and desirable for gaining wisdom, she took some and ate it. She gave some to Adam too and he ate it.

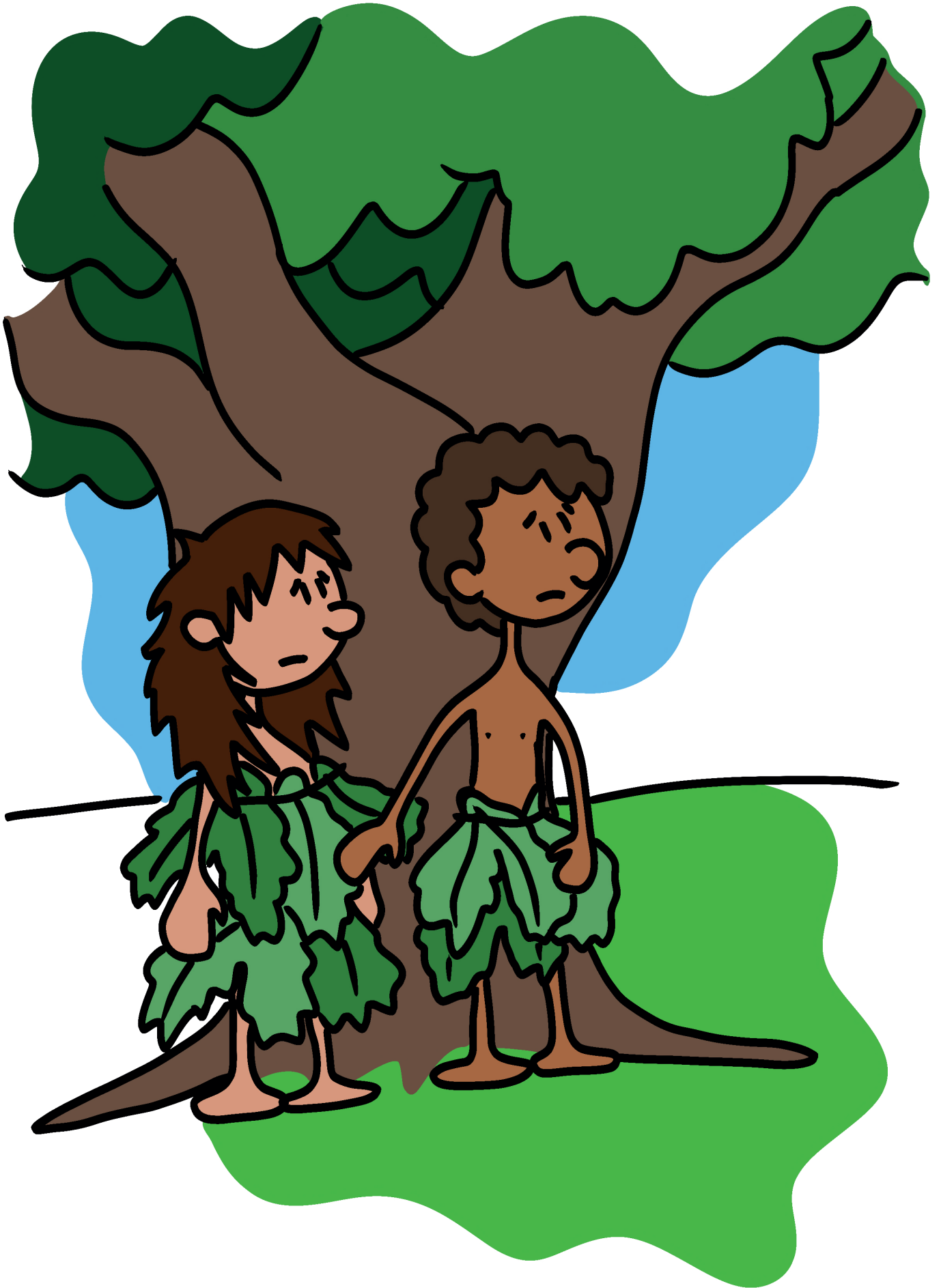


Immediately their eyes were opened and they knew they were naked. So they sewed fig leaves together to cover themselves and hid from God.

Then God called out Adam, "Where are you? Have you eaten from the tree that I told you not to eat from?"

Adam said, "The woman gave me fruit from the tree, and I ate it."

Eve said, "The serpent deceived me, and I ate it."



God said, "The man has now become like one of us, knowing good and evil. He must not be allowed to also take from the tree of life and live forever."

So God sent them out from the Garden of Eden so that they would not live forever, separated from Him.

After he drove them out, God placed angels and a flaming sword to guard the way to the tree of life.

Genesis 1:26 – 3.24

Scripture quotations taken from The Holy Bible, New International Version® NIV®
Copyright© 1973 ,1978, 1984, 2011 by Biblica, Inc. Used with permission.
All rights reserved worldwide.



God's Promise to Adam and Eve

God made the earth and planted a beautiful garden in Eden. He created a man called Adam and put him in the garden to take care of it.

God said to Adam, "You are free to eat from any tree in the garden; but you must not eat from the tree of the knowledge of good and evil, for when you eat of it you will certainly die."

But Adam was all alone. There was no suitable helper for him.

So God made a woman and brought her to Adam. Adam named her Eve.

Adam and Eve lived in God's very good garden and ruled over all the living creatures.

Now the serpent was more crafty than any of the wild animals in the garden. He said to Eve, "Did God really say, 'You must not eat from any tree in the garden'?"

Eve said, "We may eat fruit from the trees in the garden. But God did say, 'You must not eat fruit from the tree in the middle of the garden, and you must not touch it, or you will die.'"

"You will not certainly die," the serpent said. "For God knows that when you eat from it your eyes will be opened. You will be like God, knowing good and evil."

When Eve saw that the fruit of the tree was good and desirable for gaining wisdom, she took some and ate it. She gave some to Adam too and he ate it.

Immediately their eyes were opened and they knew they were naked. So they sewed fig leaves together to cover themselves and hid from God.

Then God called out Adam, "Where are you? Have you eaten from the tree that I told you not to eat from?"

Adam said, "The woman gave me fruit from the tree, and I ate it."

Eve said, "The serpent deceived me, and I ate it."

God said, "The man has now become like one of us, knowing good and evil. He must not be allowed to also take from the tree of life and live forever."

So God sent them out from the Garden of Eden so that they would not live forever, separated from Him.

After he drove them out, God placed angels and a flaming sword to guard the way to the tree of life.

Genesis 1:26 – 3:24



